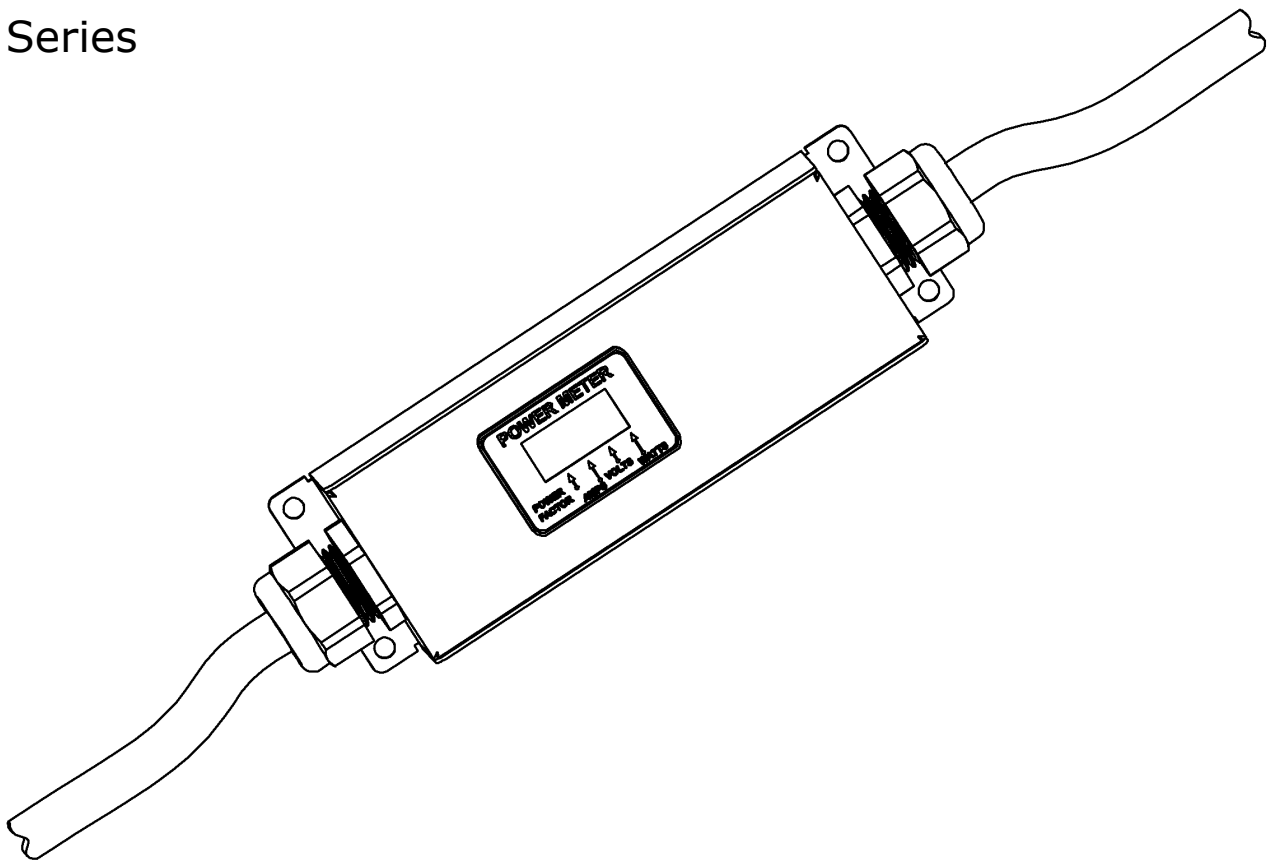




Instruction Manual
Rack In-Line Power Measurement Unit

L Series





Contents

Specifications	3
Overview	3
Environmental	3
Electrical	3
Networking (For Current Monitoring Meter Units Only)	3
Data Formats (For Current Monitoring Meter Units Only)	3
Detachable Power Supply Cords	4
EMC Verification	4
Installation	5
Instructions	5
Guidelines	5
Optional Local Monitoring	6
Power Meter	6
Current Meter	6
Three Circuit Current Meter	7
Optional Remote Monitoring	8
Current Monitoring Meter Overview	8
Current Monitoring Meter Instructions	8
Service/Tech Support	15
Service and Maintenance	15
More Technical Support	15
Table of Figures	16
Revision History	17

Specifications

Overview

The L Series products are In-Line Power Monitoring Units intended for connection between an AC Mains circuit and a Power Distribution Unit (PDU). The In-Line Power Monitoring Units are designed to be powered by either a single phase or a three phase AC input circuit and have an outlet or output cord and connector body for connection to an external device (such as a PDU). The In-Line Power Monitoring Units are rated from 12 to 32 Amps depending on the unit's configuration. Three phase units can be configured for either a delta or wye input/output connection. In-Line Power Monitoring Units can be configured with a Geist Local Current Meter, Power Meter, or a remote Current Monitoring Meter to perform the monitoring functions.

Environmental

Temperature

Operating:	10°C (50°F) min	45°C (113°F) max
Storage:	-25°C (-13°F) min	65°C (149°F) max

Humidity

Operating:	5% min	95% max	(non-condensing)
Storage:	5% min	95% max	(non-condensing)

Elevation

Operating:	0 m (0 ft) min	2000 m (6561 ft) max
Storage:	0 m (0 ft) min	15240 m (50000 ft) max

Electrical

See nameplate for unit ratings.

Networking (For Current Monitoring Meter Units Only)

Protocols

HTTP, ICMP, DHCP, TCP/IP, FTP

Ethernet Link Speed

10 Mbit; half-duplex

Data Formats (For Current Monitoring Meter Units Only)

HTML, SNMP, XML

Detachable Power Supply Cords

L Series In-Line Power Monitoring Units may optionally be configured with an AC Inlet for connection to AC Mains power. Use only detachable power supply cords of the appropriate size and type, as stated below, with the unit. Use only with light PVC sheathed flexible cords (according to IEC 60227) or ordinary tough rubber-sheathed flexible cords (according to IEC 60245) that terminate in an attachment plug meeting local/national code requirements.

For Global units use a minimum 1.5 mm² nominal conductor cross-sectional area detachable power supply cord with ratings of 300 V and 75 °C. The power supply cord cable designation should be H03VV-F, H03VVH2-F, or better.

For North American units use a minimum 14 AWG power supply cord with ratings of 300 V and 75 °C. The power supply cord cable designation should be SJT or better.

EMC Verification

This Class A device complies with part 15 of the FCC Rules. Operation is subject to the following two conditions: (1) This device may not cause harmful interference, and (2) this device must accept any interference received, including interference that may cause undesired operation.

This Class A digital apparatus complies with Canadian ICES-003.

Cet appareil numérique de la classe A est conforme à la norme NMB-003 du Canada.

Warning: Changes or modifications to this unit not expressly approved by the party responsible for compliance could void the user's authority to operate this equipment.

FCC and Canadian ICES-003 requirements for units with Current Monitoring Meter: The ferrite core shipped with the unit must be placed around the Ethernet cable close to the In-Line Meter.

Installation

Instructions

1. Using appropriate hardware, mount In-Line Meter to rack
2. Plug In-Line Meter into de-energized branch circuit receptacle¹.
3. Connect external device to the In-Line Meter's output outlet or connector.
4. Turn on branch circuit to energize the In-Line Meter.
5. Power on external device.

Guidelines

- If the In-Line Meter is installed in a cabinet the ambient temperature of the rack should be no greater than 45°C.
- Install the In-Line Meter such that the amount of airflow required for safe operation of equipment is not compromised.
- Mount the In-Line Meter so that a hazardous condition is not achieved due to uneven mechanical loading.
- Follow nameplate ratings when connecting equipment to the branch circuit. Take into consideration the effect that overloading of the circuits might have on overcurrent protection and supply wiring.
- The In-Line Meter relies on the building installation for protection from overcurrent conditions. A certified overcurrent protection device is required in the building installation. The overcurrent protection device should be sized according to the In-Line Meter's nameplate ratings and local/national electrical codes.
- Reliable earthing of rack-mount equipment should be maintained. Particular attention should be given to supply connections other than direct connections to the branch circuit.
- The In-Line Meter must be connected to an earthed socket-outlet.
- The In-Line Meter is intended for Restricted Access Locations only and only qualified service personnel should install and access the In-Line Meter.
- For pluggable equipment, install the In-Line Meter so that the input plug or appliance coupler may be disconnected for service.
- **Caution:** Disconnect all power cords before servicing.
- The In-Line Meter is intended for use with TN, TT, or IT power supply systems

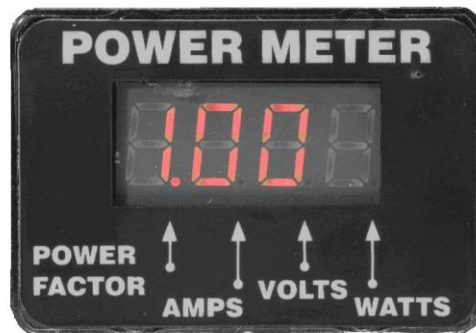
¹ Branch Circuit should be sized based on the In-Line Meter's nameplate electrical rating. For North American units, the branch circuit should have a current rating equal to 125% of the unit's nameplate current rating. For Global units, the branch circuit should have a current rating equal to the unit's nameplate current rating.

Optional Local Monitoring

Power Meter

The Geist PM-1 power meter is a low-power, high accuracy meter capable of measuring true RMS Current, Voltage, Power, and Power Factor. These values are individually shown on an easy to read, 4-digit LED Display, which continuously scrolls through the four different measured values. Each one of these displayed parameters is defined below. The Power Meter will automatically begin cycling through the displayed values when the In-Line Meter is connected to AC Mains power.

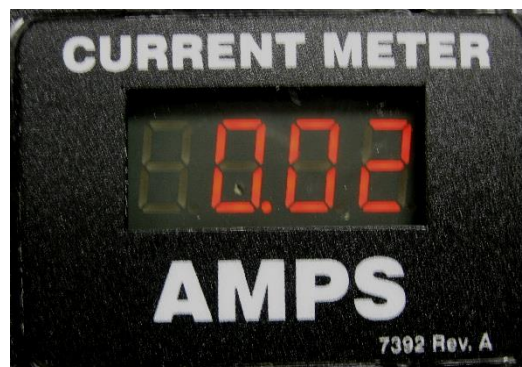
- Current: In-Line Meter output current draw measured in true RMS Amps
- Voltage: In-Line Meter output voltage measured in true RMS Voltage
- Power: In-Line Meter output power measured in Watts – referred to as real or active power
- Power Factor: Ration of real In-Line Meter output power to apparent In-Line Meter output power²



Power Meter Display

Current Meter

The Geist CM-1 current meter is a low-power, high accuracy meter capable of measuring true RMS Current. The value of current is continuously shown on an easy to read, 4-digit LED Display. The Current Meter will automatically begin to display value of output current when the In-Line Meter is connected to AC Mains power.



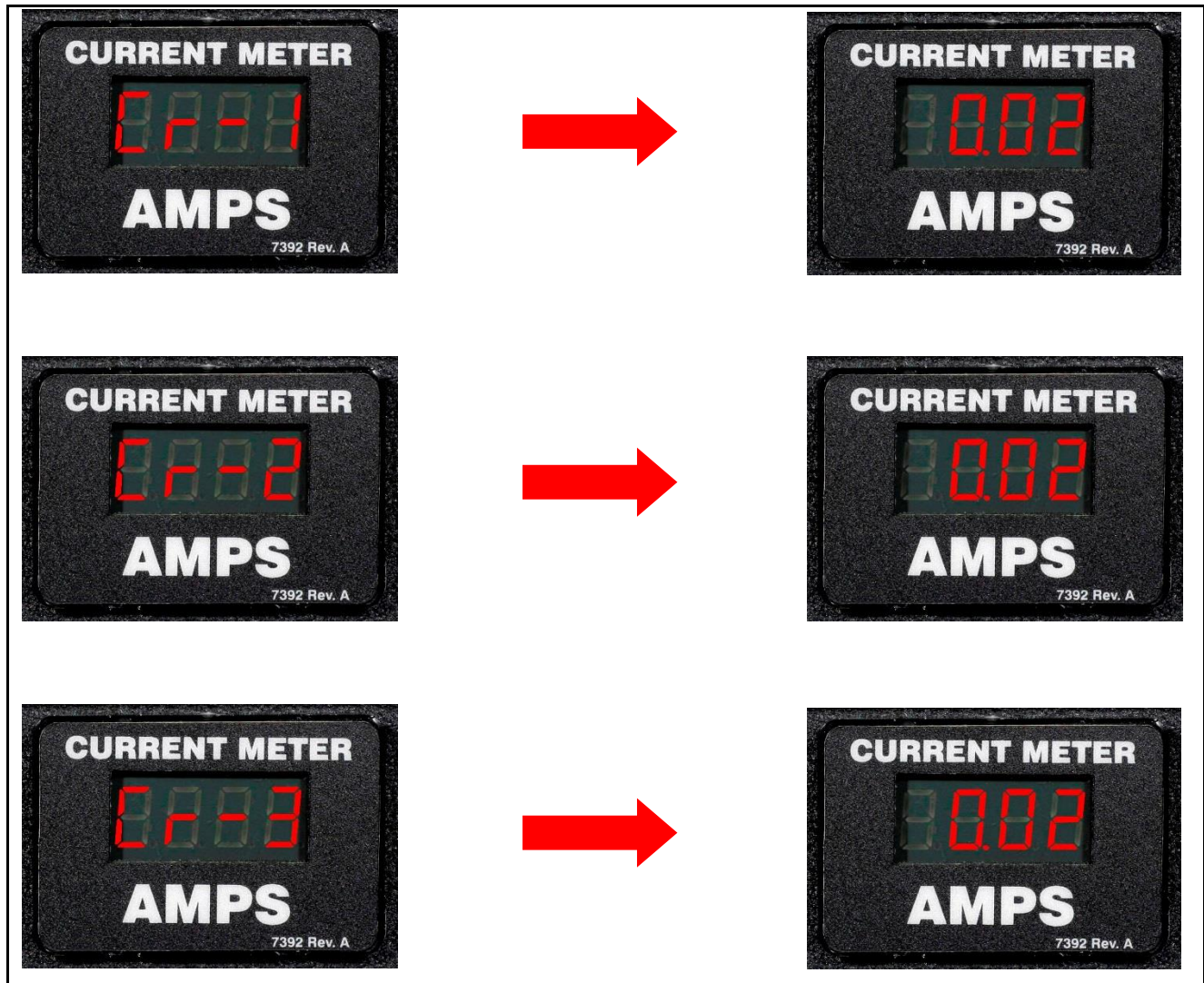
Current Meter Display

² Real power is the power in a circuit that is transformed from electric to non-electric energy, while apparent power is the total power supplied to the circuit.

Three Circuit Current Meter

The Geist CM-3 current meter is a low-power, high accuracy meter capable of measuring true RMS Current. The value of current per output circuit is shown on an easy to read, 4-digit LED Display. The display continuously scrolls through the three different measured values of output circuit current. The Current Meter will automatically begin to display value of output current when the In-Line Meter is connected to AC Mains power.

The CM-3 meter displays the circuit name followed by the circuit reading. All three circuits are displayed and the cycle is continuously repeated as illustrated in the figure below.

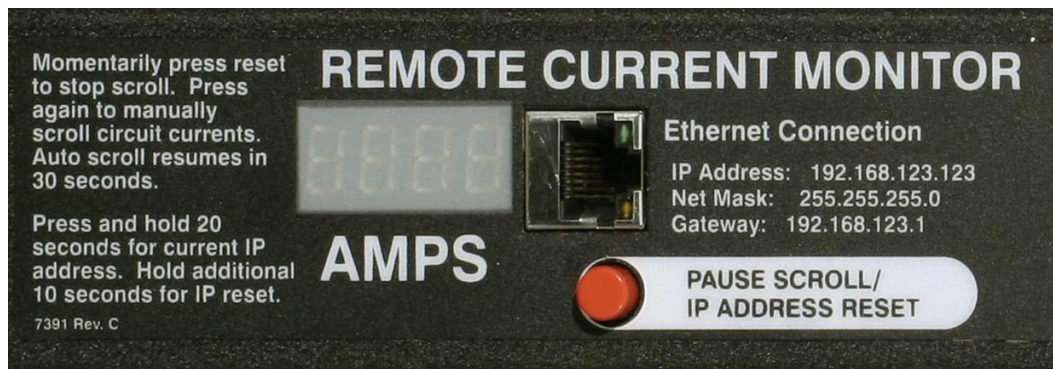


Current Meter Display Sequence

Optional Remote Monitoring

Current Monitoring Meter Overview

The Geist Current Monitoring Meter is a high accuracy meter capable of measuring true RMS current. The value of line current per input phase and output circuit current is shown on an easy to read, 4-digit LED Display.³ The display continuously scrolls through the different measured values. The Current Monitoring Meter also provides access to measurement data and control values through a web page, SNMP, or XML. The *Current Monitoring Meter Instructions* section of this document will give more detailed information on the operation and functionality of the Current Monitoring Meter.



Current Monitoring Meter

Current Monitoring Meter Instructions

Setting an IP Address

The In-Line Meter comes preset with an IP address for initial setup and access to the unit. The 'Configuration page' contains the network properties. Access to the unit requires the IP address to be known, the IP address may be manually reset should the user-configured address be forgotten. The default address is:

IP Address: 192.168.123.123
Subnet Mask: 255.255.255.0
Gateway: 192.168.123.1

First time setup:

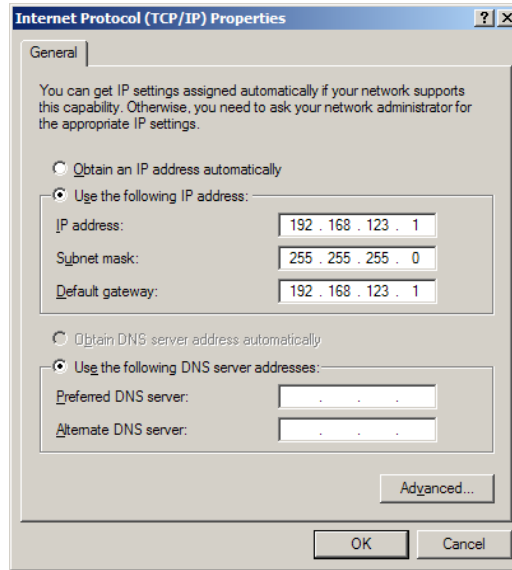
1. Connect the In-Line Meter to your computer using a crossover cable or a hub.
2. On your computer, go to "Start > Settings > Control Panel > Network and Dial Up Connections."
3. Right Click on "Local Area Connection" and select "Properties."
4. Select the option to "Use the following IP address" and enter:
IP address: 192.168.123.1
Subnet mask: 255.255.255.0
Default gateway: 192.168.123.1⁴

³ Actual configuration of circuits measured by Current Monitoring Meter is In-Line Meter model specific. Please contact Geist Customer Service department with questions on measurement configuration of Current Monitoring Meters.

⁴ In some configurations, leaving the gateway field blank may resolve connectivity issues.

Click "OK" twice.

You can now access the unit using your web browser at the permanent IP address of 192.168.123.123.



Typical Network Card Settings for PC or Laptop to connect to default IP address

First time setup (MacOS 10.5 and 10.6):

Open System Preferences via the Dock or the Apple menu.

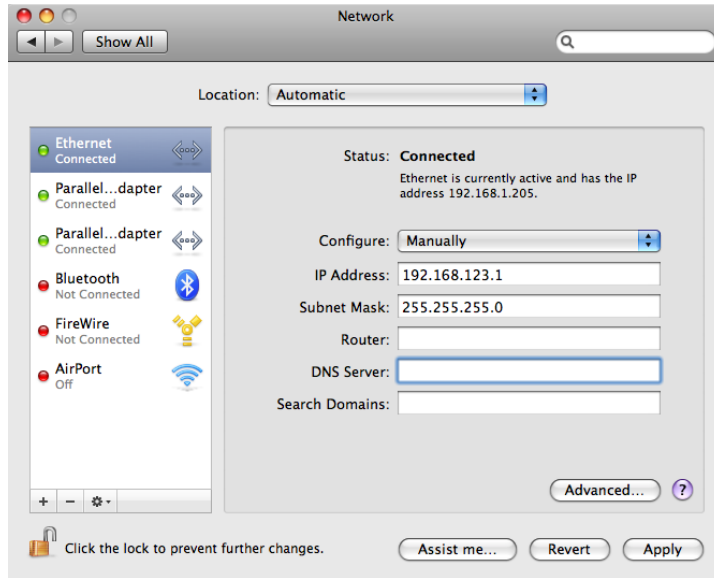
Select "Network" under "Internet & Network."

Select "Ethernet" from the list on the left side of the window and enter these settings on the right side of the window:

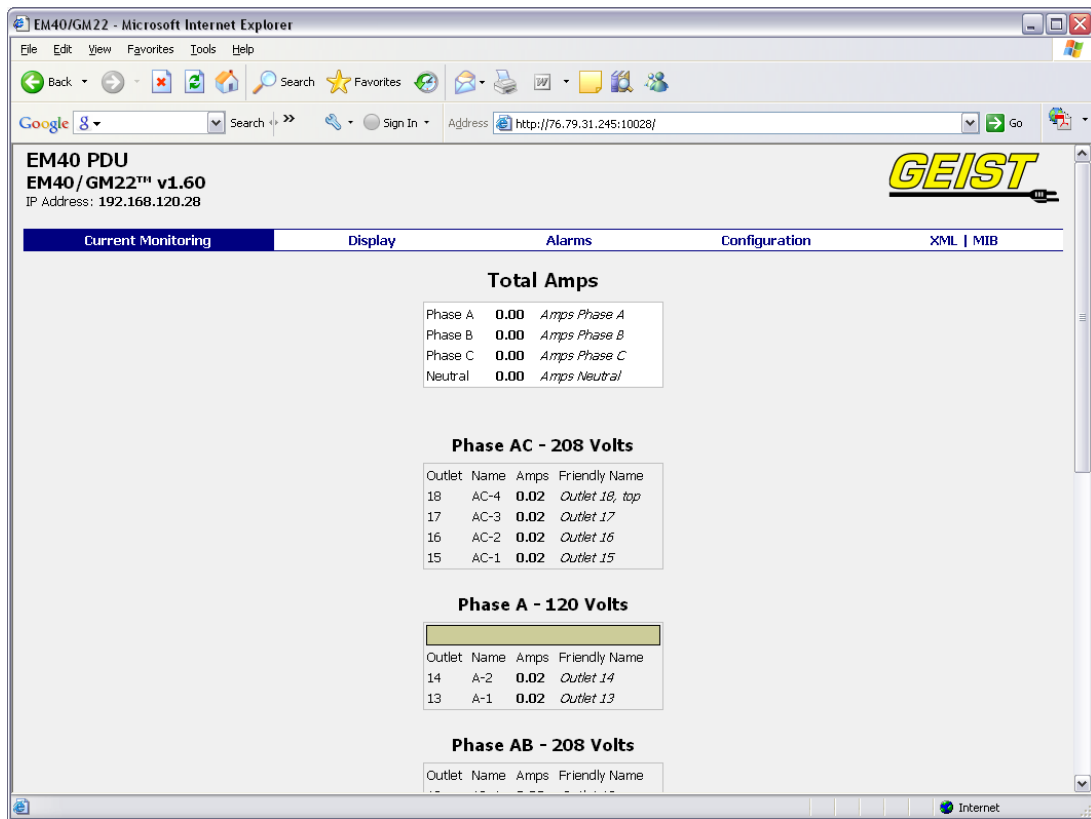
- **Configure:** Manually
- **IP Address:** 192.168.123.1
- **Subnet Mask:** 255.255.255.0
- **Router:** Leave blank

Hit "Apply" and confirm the changes.

The unit should now be accessible in a web browser via the unit's permanent IP address: <http://192.168.123.123/>.



MacOS X network settings for initial setup



Connecting to the In-Line Meter using a web browser

LED Display

Each In-Line Meter has a built-in 4-digit LED display mounted midway down the chassis. The display scrolls through the most recent current measurement (in amps) for each circuit, one at a time. It displays a circuit name, pauses, and then displays the measurement. Momentarily press the "Pause Scroll/IP Address Reset" button on the front of the In-Line Meter to pause the display on the current measurement. While paused, the display will cycle back and forth between circuit name and current reading every three seconds. Momentarily pressing the "Pause Scroll/IP Address Reset" button again will skip ahead to the next circuit. The display will begin to scroll again thirty seconds after the last button push.

Notes: During the first cycle after the display has been paused, the display may take up to six seconds to display a measurement.

Due to the time required to measure current accurately, the same reading may be shown twice while the display is paused.

For reference:

Cr-1 = Circuit 1	Ph-A = Phase A
Cr-2 = Circuit 2	Ph-b = Phase B
Cr-3 = Circuit 3	Ph-C = Phase C
Cr-4 = Circuit 4	nEUt = Neutral
Cr-5 = Circuit 5	Fd-A = Feed A
Cr-6 = Circuit 6	Fd-B = Feed B

Viewing the IP Address/Resetting to Default IP

In the event that the IP address of the In-Line Meter is lost, it is possible to view the currently configured IP address on the unit's built-in LED display or reset the IP address to the default.

To view the IP address, press and hold the "Pause Scroll/IP Address Reset" button on the front of the In-Line Meter for 20 seconds. The screen will stop displaying scrolling power data in order to display the currently configured IP address. The display will show the IP address using the following format:

c-IP→aaa→.→bbb→.→ccc→.→ddd

The '→' indicates a pause and the aaa/bbb/ccc/ddd indicate a portion of the currently configured IP address. The IP address will be displayed twice before normal scrolling continues.

CAUTION: If the "Pause Scroll/IP Address Reset" button is being held while the second segment (bbb above) of the IP address is being displayed, the unit's IP address will be reset. To prevent this, release the button as soon as "c-IP" shows up on the display.

To reset the IP address to the backup IP address, press and hold the "Pause Scroll/IP Address Reset" button on the front of the In-Line Meter for 20 seconds, at which point the display will show the current IP address. Continue to hold the "Pause Scroll/IP Address Reset" button for 10 more seconds and the display will switch to scrolling d-IP→192→.→168→.→123→.→123. The IP address is then reset to 192.168.123.123. The display will resume its normal function after the display shows the IP address twice and the "Pause Scroll/IP Address Reset" has been released. Once the IP address has been reset, the *Setting an IP Address* instructions should be followed to access the unit.

Rebooting the Meter

Should a Current Monitoring Meter with firmware version 1.36 or higher installed stop responding to network traffic, it is possible to restore functionality by rebooting the meter without removing power from the In-Line Meter it is enclosed in.

To reboot the meter, press and hold the "Pause Scroll/IP Address Reset" button on the front on the In-Line Meter for 20 seconds. The screen will stop displaying scrolling power data in order to display the currently configured IP address. The display will show the IP address using the following format:

c-IP→aaa →. →bbb →. →ccc →. →ddd

The '→' indicates a pause and the aaa/bbb/ccc/ddd indicate a portion of the currently configured IP address. As soon as "c-IP" is displayed, release the "Pause Scroll/IP Address Reset" button. Press and release the "Pause Scroll/IP Address Reset" button twice while the IP address is being displayed. The screen will read "8.8.8.8." for a few seconds and then resume scrolling normally, indicating a successful reboot.

Web Page

The main interface to the In-Line Meter is its web page, accessible by typing the unit's IP address into a web browser. The web page is the source for the most up to date measurement of each circuit. All measurements are in Amps.

SNMP/XML

In addition to HTML based web pages, the In- presents its data via SNMP and an XML page.

To use the In-Line Meter with SNMP Client software, download the MIB from the link on the unit's web page and import it into the SNMP software. Contact the client software manufacturer for instructions specific to their software. The In-Line Meter's SNMP community comes preset to 'public'. To change this, go to the 'Configuration' page, enter a new name in the SNMP Community box and hit "Save Changes." In addition SNMP traps can be utilized to monitor a user set threshold for each circuit, alarm settings and SNMP server settings are located on the 'Configuration' page.

The XML page provides terse output that is easily parsed by both humans and computers and is useful for creating scripts to download and process information off the unit automatically. The XML page is available at <http://<IP address of meter>/data.xml>.

Sample uses of XML and SNMP data are provided in the *Sample Usage* section of this document.

Firmware Updates/Instructions

The unit firmware is field upgradeable via FTP. Firmware updates and instructions are available at the following website.

<http://www.geistglobal.com/GeistUS/Docs/downloads.htm>

Sample Usage

The simplest way to get data from a Current Monitoring Meter into a script is via the XML page. Simply performing an HTTP GET (as a web browser does) on `http://<IP address of meter>/data.xml` will download the XML file. The following examples assume that the meter's IP address is 192.168.123.123.

Perl Example:

```
using LWP::UserAgent;
my $ip = "192.168.123.123";
my $browser = LWP::UserAgent->new;
$browser->timeout(5);
my $xmlFile = $browser->get("http://" . $ip . "/data.xml")->content;
```

At this point, `$xmlFile` will contain the text of `data.xml`, ready to be parsed however necessary.

Unix/Linux Command Line Example:

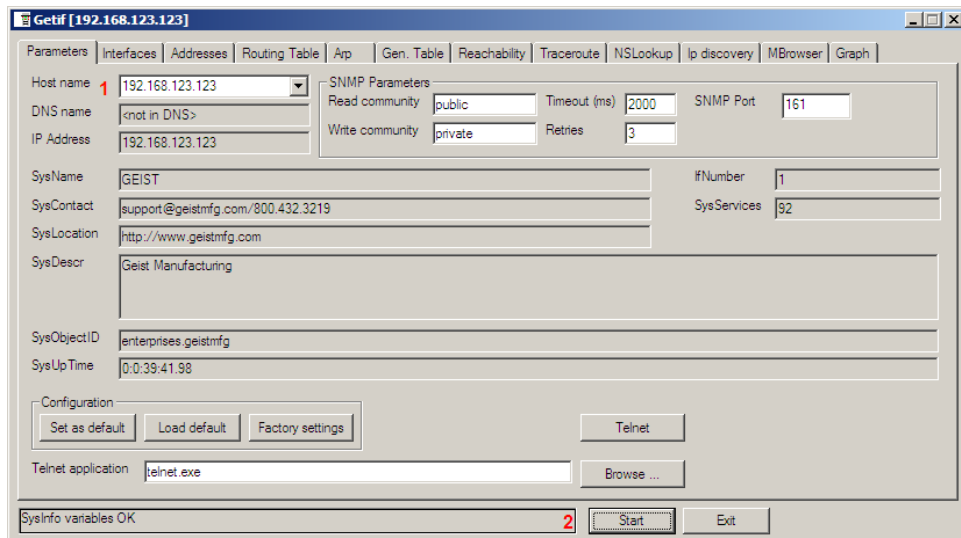
```
wget http://192.168.123.123/data.xml
```

This command will download `data.xml` into the current directory. At this point, the file is ready to be used by any local application or script.

SNMP Example

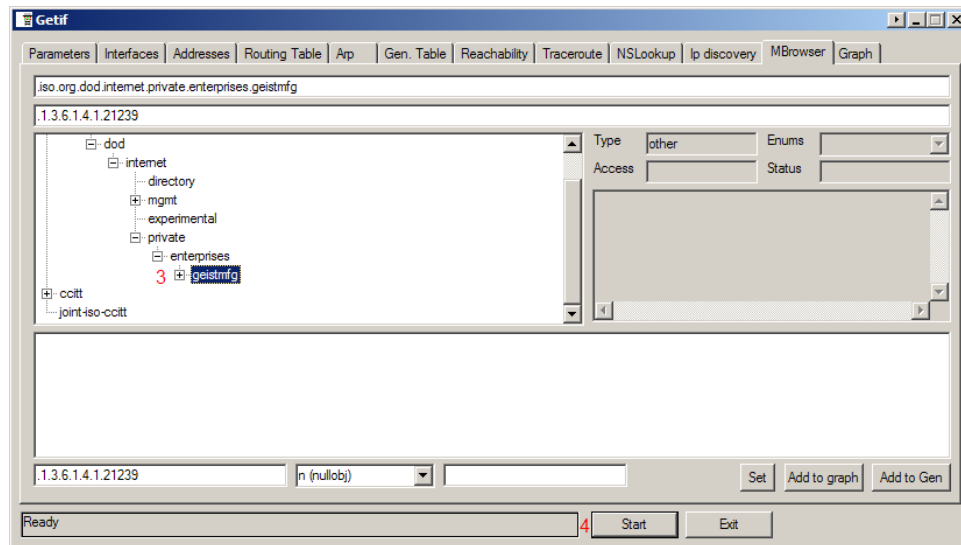
Getif is a simple, free SNMP viewer for Windows available from:
<http://www.wtcs.org/snmp4tpc/getif.htm>

1. Drop the Current Monitoring Meter's MIB file into Getif's MIBs directory (Typically `C:\Program Files\Getif 2.3.1\MIBs`) and start Getif.
2. Type in the unit's IP address into the box labeled "Host Name" and click the Start button.



Getif Configuration Example

3. Click the 'MBrowser' tab and expand the .iso tree down to geistmfg.
4. Select geistmfg and click the Start button. Getif should start requesting data from the unit via SNMP and display it in the large box at the bottom of the window.



Getif Geist Entry in MIB Table

Service/Tech Support

Service and Maintenance

No service or maintenance is required. Do not attempt to open the In-Line Meter or you may void the warranty. No serviceable parts inside. It is recommended that power be removed from the unit before installing or removing any equipment.

More Technical Support

<http://www.geistglobal.com>

(800) 432-3219

Email: support@geistglobal.com

Or contact your distributor.

Table of Figures

Power Meter Display	6
Current Meter Display	6
Current Meter Display Sequence	7
Current Monitoring Meter	8
Typical Network Card Settings for PC	9
MacOS X network settings for initial setup	10
Connecting to the In-Line Meter using a web browser	10
Getif Configuration Example	13
Getif Geist Entry in MIB Table.....	14

Revision History

Revision	Date	Notes	Approved By
1.0	6/17/2009	Original Published Version	BP
1.1	7/1/2009	Added Link Speed Information	BP
1.2	6/29/2010	Updated Current Monitoring Meter Name	BP
2.0	7/28/2014	Changed logo, company name, email, and web address	QN