

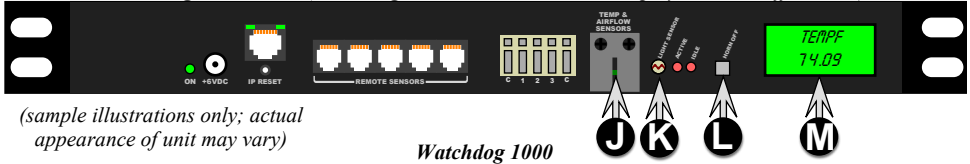
Watchdog 1000-Series quick setup guide

NOTE: This guide is only meant to assist in identifying your Watchdog 1000-series unit and its included accessories, if any, and to assist you with initial setup of the unit. It does not describe all of the unit's features and capabilities in detail. Please refer to the full user's manual for complete information about how to use all of the unit's capabilities. Also note that for purposes of the following instructions, all members of the Watchdog 1000-series family behave identically, so "Watchdog 1000-series" is used generically to refer to all models.)

Watchdog 1000-Series kit will include:

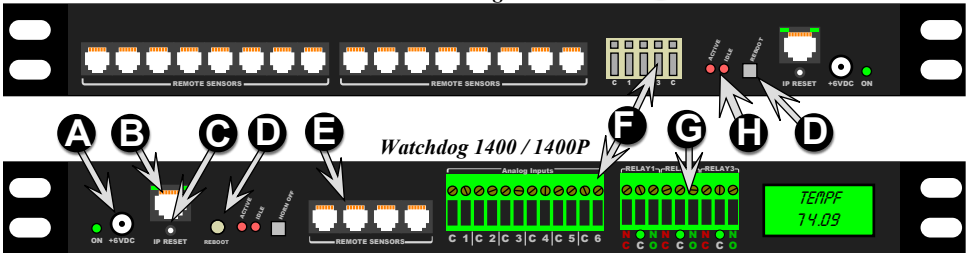
- Watchdog 1000, Watchdog 1200, Watchdog 1250, Watchdog 1400, or Watchdog 1400P rack-mountable environmental monitor.
(“Watchdog 1400P” designates a Watchdog 1400 with the Power-over-Ethernet option installed. The 1400 and 1400P are otherwise identical in function and capabilities. Note that the 1400P is the only model which has a PoE option available; this option is not available on the 1000, 1200, or 1250.)
- +6Vdc power supply (unless the “no power supply” option was chosen when the unit was ordered)

Watchdog 1200 / 1250 (Watchdog 1200 will not have LCD display or “horn off” button)



(sample illustrations only; actual appearance of unit may vary)

Watchdog 1000



Watchdog 1400 / 1400P

- A** DC power jack: +6VDC power supply connects here.
- B** Ethernet jack: Right LED indicates “link” when lit; left LED indicates network activity when blinking.
- C** RESET button: To reset the IP address to the factory default of 192.168.123.123 and clear any **User Account** username/password settings, use a pushpin or paperclip to press and hold this pinhole button for approximately 20 seconds, until both of the red Active and Idle LEDs light up solidly (no blinking pattern).

To completely erase all settings and reset the unit to factory defaults, disconnect power from the unit, push in the reset button, reapply power, keep the reset button pushed in for at least 5 seconds, then release.

- D** REBOOT button: reboots the unit (Watchdog 1000 / 1400 / 1400P only)
- E** Digital Sensor jacks: Up to sixteen Digital Bus-type external sensors may be connected. (may require an external port-splitter, sold separately)
- F** Analog Inputs: for dry-contact switches, relay contacts, or analog sensors with 0 ~ +5Vdc output voltages.
- G** Relay Outputs: (Watchdog 1400 / 1400P only) Dry-contact relays for controlling external low-voltage devices. The LEDs under the terminal block shows the relay states: de-energized (red) or energized (green).
- H** Active / Idle LEDs: Indicates that the unit is operating, and communicating with the sensor-bus controller and external sensors (if any).
- J** Temperature/Humidity/Airflow sensor: Make sure that this is not blocked or covered up when the unit is mounted. (Watchdog 1200 / 1250 only)
- K** Light sensor: (Watchdog 1200 / 1250 only) Measures ambient light level.
- L** HORN OFF button: (WatchDog 1250 / 1400 / 1400P only) Silences the internal alarm buzzer even if the alarm condition which tripped it has not yet been cleared.
- M** LCD status display: (WatchDog 1250 / 1400 / 1400P only) Displays unit status information and sensor measurements.

“QUICK-START” NETWORK SETUP:

By default, the unit’s IP address is set to **192.168.123.123** from the factory. To access the unit for the first time, you will probably need to temporarily change your computer’s network settings to match the 192.168.123.xxx subnet.

To set up the Watchdog 1000-series unit, connect it to a PC’s Ethernet port (some PC’s may require a special “crossover” Ethernet cable to make this type of direct connection), connect the 6V power supply, then follow the appropriate instructions for your PC’s operating system:

- **FOR WINDOWS 2000 / XP / SERVER2003:** Click the **Start** button, choose **Settings**, then **Network Connections**.
- **FOR WINDOWS 7 / SERVER2008:** Click the **Start** button, then choose **Control Panel** → **Adjust Your Computer’s Settings** → **Network & Sharing Center** → **Change Adapter Settings**.

Locate the entry under **LAN or High-Speed Internet** which corresponds to the network card (or “NIC”) which the unit is connected to. (Most PCs only have a single NIC installed, but a WiFi connection will also show as a NIC, so be sure to choose the correct entry.) Double-click on the network adapter’s entry in the **Network Connections** list to open its status dialog box, then click the **Properties** button to open the **Local Properties** window (fig.1).

Find the entry titled “Internet Protocol (TCP/IP)” in the list, then click the **Properties** button to open the **Internet Protocol Properties** window (fig.2). If you see more than one TCP/IP entry, the PC may be configured for IPv6 support as well as IPv4; make sure to select the entry for the IPv4 protocol. **Make sure you write down any settings shown here before changing them!**

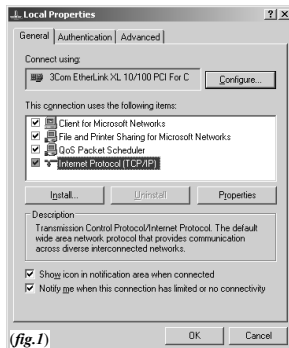
Choose the **Use the following IP address** option, then set **IP address** to **192.168.123.100** and **Subnet Mask** to **255.255.255.0**. For this initial setup, **Default Gateway** and the **DNS Server** entries can be left blank. Select **OK**, then **OK** again to close both the **Internet Protocol Properties** and **Local Properties** windows.

- **FOR MAC OS X:** Click the **System Preferences** icon on the Dock, and choose **Network**. Select **Built-in Ethernet** from the **Show** drop-down list to display the Mac’s Ethernet card (“NIC”) settings, then choose the **TCP/IP** settings, as shown in (fig.3). **Make sure you write down any settings shown here before changing them!**

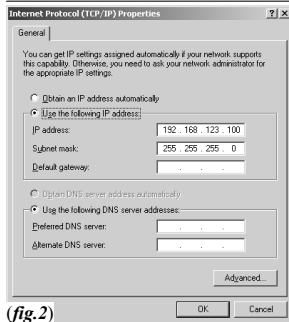
Select **Manually** from the **Configure IPv4** drop-down list, then set **IP address** to **192.168.123.100** and **Subnet Mask** to **255.255.255.0**. (The **Router** and **DNS Servers** can be left blank for this initial setup.) Click **Apply Now** to make the settings take effect.

Once the NIC settings are configured properly, you should be able to access the unit by typing **http://192.168.123.123** into the address bar of your web browser. The unit’s **Sensors** page will come up by default; click the **Config** tab on the left-hand side of the web page to bring up the configuration-settings page, then click the **Network** sub-tab to set the **Network** parameters (fig.4) as needed. The unit’s **IP Address**, **Subnet Mask**, **Gateway**, and **DNS** settings can either be assigned manually, or acquired via DHCP. (For more information, refer to “Assigning an IP Address” in the appropriate user manual for your model, available for download from our web site.)

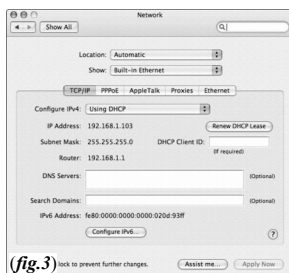
*Note that the new settings will take effect instantly when **Save Changes** is clicked, so the browser will no longer be able to reload the web page from the 192.168.123.123 address and will probably display a “page not found” or “host unavailable” message. This behavior is normal. Once you have finished configuring the unit’s IP address, simply repeat the steps above, and change the PC’s NIC card settings back to the ones you wrote down prior to changing them, to restore the PC’s normal network and internet settings.*



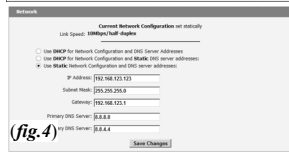
(fig.1)



(fig.2)



(fig.3)



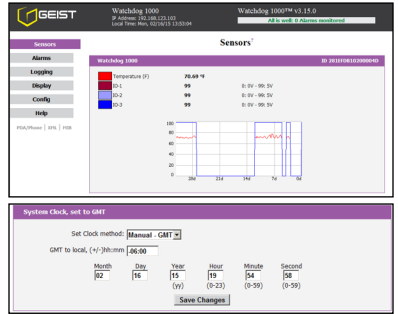
(fig.4)

SETUP EXAMPLES TO TEST YOUR WATCHDOG 1000-SERIES MONITORING UNIT:

*Note: The following instructions assume that you have successfully connected the unit to a network, assigned it an IP address, and have been able to bring up its **Sensors** page in your web browser using the “Quick-Start Network Setup” instructions on the preceding page.)*

Before the unit can log data, its real-time clock must be set to the correct time. The **System Clock** settings are on the **Config-Admin** page; click the **Config** tab on the left-hand side of the web page to bring up the configuration-settings page, click the **Admin** sub-tab, then scroll down the page until you find the time-settings block, as shown here.

The clock can either be set manually, or it can be automatically synced to an NTP time server. By default, **Set Clock Method** is set to **Manual-GMT**; just fill in the **Year**, **Month**, **Day**, **Hour**, **Minutes**, and **Seconds** fields, as shown here. Note that the unit uses a 24-hour clock format; i.e. 8AM would be represented as 08:00:00, while 8PM would be 20:00:00.

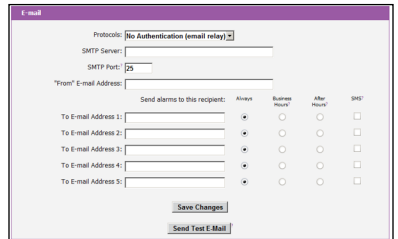


The unit's time is always set in GMT (Greenwich Mean Time). To convert this to your local time, set the appropriate **GMT to local** offset (specified as + or – the appropriate amount in hours and minutes, i.e. –05:00 for U.S Eastern Standard Time, +10:00 for East Australia Time, etc.) for your particular time zone. Then click **Save Changes**, and the clock will be set. If Daylight-Saving Time is in effect in your area, be sure to add +1 to the offset, as appropriate (i.e. use –04:00 for U.S Eastern Daylight Time instead of –05:00.)

To have the unit set the time automatically via NTP, change **Set Clock Method** to **NTP**, then click **Save Changes**. Note, however, that for this to work, you will need to have correctly set the **Gateway** and **DNS Servers** in the **Network** settings block, so that the unit is able to reach the outside internet to look up the NTP server's address and communicate with it. If these settings are not correct, or if the network's firewall settings are not set up to allow the unit to access the outside internet, NTP mode will not work.

Next, the **Email** settings on the **Config-Monitoring** page need to be configured, for the unit to be able to send alerts. If you plan to use an external SMTP server or a “hosted” service such as Gmail or AOL, you will need to obtain the correct SMTP settings for your account from those services.

The unit will only work with a standard SMTP mail server. It does not support IMAP, or the proprietary MAPI/RPC protocol used by Microsoft Exchange and Outlook. (The unit can use an Exchange server to send e-mails, if the Exchange server is set up to allow SMTP connections; however, this may require some additional configuration of the Exchange server to allow the unit to connect to it properly. Please consult the unit's user manual for more information on this.) Therefore, if you need to contact your service provider to get the correct settings, you may need to explicitly mention that you are not setting up Outlook, or a browser-based e-mail client, on a Windows or Mac computer, in order to get the correct “generic” SMTP settings from them.



To send e-mails through a Gmail account, for example, the settings would be programmed as follows:

Protocols: ESMTTP/TLS/SSL
Server: smtp.gmail.com
Port: 587
“From” E-mail address: complete Gmail e-mail address (i.e. user@gmail.com)
Username: complete Gmail e-mail address (i.e. user@gmail.com)
Password: Gmail login password

Then put the e-mail addresses you want to have e-mail alerts sent to into the **To E-mail Address** fields. Only one address can be entered into each **To E-mail Address** field; you cannot “stack” a list of recipients, i.e. “user1@mail.net; user2@mail.net; user3@mail.net”, within a single **To E-mail Address** entry.

Once the correct e-mail server settings have been entered, click **Save Changes**, then click **Send Test Email** to have the unit send a test message. If you do not receive the test message within a couple of minutes, double-check

the settings you entered above. The most common issues are using the wrong login credentials (username and password), the wrong **Protocols** settings, or a network problem which prevented the unit from being able to reach the e-mail server at all. Note that, as described with the NTP time settings above, the **Network** settings must be correct; if the **Gateway** and **DNS Servers** settings are not set properly, the unit will not be able to reach the SMTP mail server, and will not be able to send e-mails.

Additionally, be sure to check your e-mail client's spam folder, to make sure the test message wasn't accidentally marked as spam.

Once you have gotten the unit to send a test e-mail, you can also test its ability to send actual alarms by setting a temperature alarm on the **Alarms** page, then warming the sensor to trip the alarm.

First, go to the **Sensors** page, and take note of the current temperature.

Next, go to the **Alarms** page, click **Add New Alarm**, then use the drop-down boxes to select the "**Temperature (F)**" or "**Temperature (C)**" reading (whichever scale you prefer), set **Trips if** to "**Above**", then set **threshold** to a couple of degrees higher than the current temperature. On the right-hand side, set a checkbox on at least one of the **E-mail** addresses in the list – and be sure that the actual e-mail address is shown next to the checkbox; if the checkbox simply reads "(Email 1)", "(Email 2)", etc., then that checkbox doesn't have a valid **Destination** e-mail address programmed into it on the **Config** page yet, and putting a check in that box won't send any messages.

Watchdog 1000 ID: 281EFDB1020004D

Temperature (F) Alarm must remain tripped for 0 (min) before notification

Trips if: Above threshold: 80.0 Repeat every: No Repeat

E-mail: frostmailinator.com (E-mail 2) (E-mail 3) [checked]

Save Changes Add New Alarm

For now, leave the **Alarm must remain tripped for [](min) before notification** setting at "0" and **Repeat every:** at **No Repeat**, and click **Save Changes**.

To trip the alarm, return to the **Sensors** page so that you can see the current temperature, then simply warm the unit's sensor by a few degrees by blowing warm air at it. When the temperature exceeds the threshold limit, the status messages in the upper-right corner of the web page should change to show "1 Tripped" alarm, and the temperature reading itself should turn red. (Some browsers may require you to manually refresh the web page to see this.) If the unit's e-mail server settings are properly configured, within a few moments you should also receive an e-mail which says "Watchdog 1000: Temperature - High TRIP" in the subject line, and shows both the alarm threshold and the current temperature in the message body.

Watchdog 1000™ v3.15.0

Alarms: 1 Monitored, 1 Tripped, 0 Unplugged

Sensors

ID: 281EFDB1020004D

Watchdog 1000

Temperature (F)	81.05 °F	0: 0V - 99: 5
I0-1	99	0: 0V - 99: 5
I0-2	99	0: 0V - 99: 5
I0-3	99	0: 0V - 99: 5

Allow the sensor to cool off again, and when the temperature drops a full degree below the threshold limit you set, the "Tripped" message should disappear from the web page, the current-temperature reading will turn black again, and you should receive an e-mail with a subject line of "Watchdog 1000: Temperature - Cleared".

If you have successfully managed to perform the above steps, then... congratulations! The unit is now correctly set up for your network and SMTP service, and is ready to use. More complete information about all of the unit's functions and capabilities can be found in the User's Manual for your model. Clicking the **Help** tab on the unit's web page will open a new browser window to the "Support" area of our web site; the manual can be downloaded as a PDF file from the "Documentation" section.