

# Vertiv™ Avocent® ADX MP1000 Management Platform

## Technical Note

AUGUST 2023

### Technical Note Section Outline

1. Overview
2. Creating a USB Bootable Disk Image
3. Installing the Firmware File
4. Licensing

### 1. Overview

If you lose the firmware image file for the Vertiv™ Avocent® ADX MP1000 Management Platform appliance, recovery is possible. Recovery should only be considered if you have lost administrator access, the file system has become corrupted, or other similar technical issues have occurred. In the case of image failure, contact Vertiv Technical Support to obtain a copy of the firmware image and refer to the following procedures for recovery.

**NOTE: The image file extension should be .hddimg.**

### 2. Creating a USB Bootable Disk Image

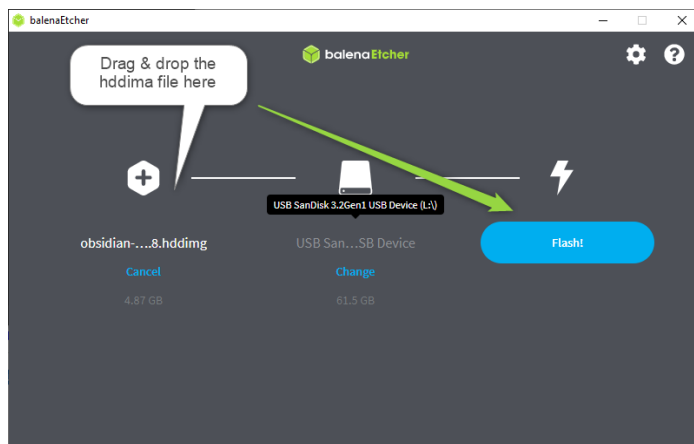
**NOTE: Any references to USB bootable disks represent the various types of storage mediums designed for loading and booting an operating system (OS).**

To create a USB bootable disk image:

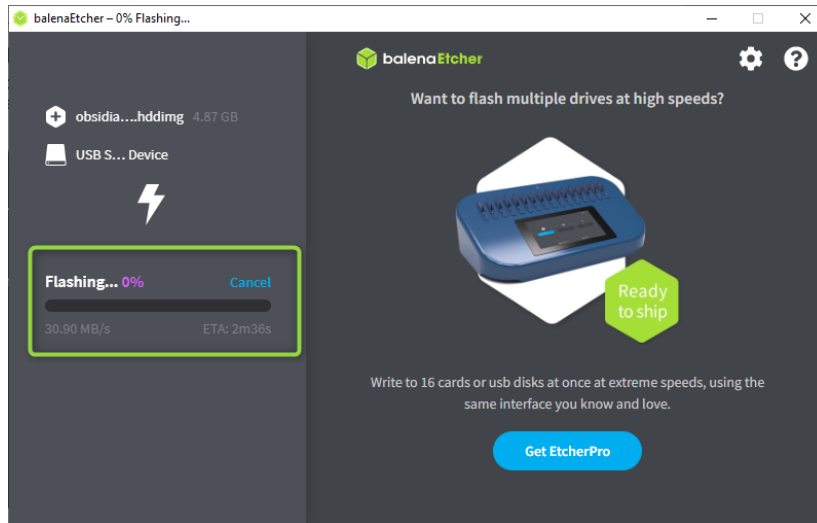
1. Insert a USB bootable disk into your computer.
2. On your computer, open and run an open-source OS.

**NOTE: These steps are based on balenaEtcher, but other open-source OSs can be used.**

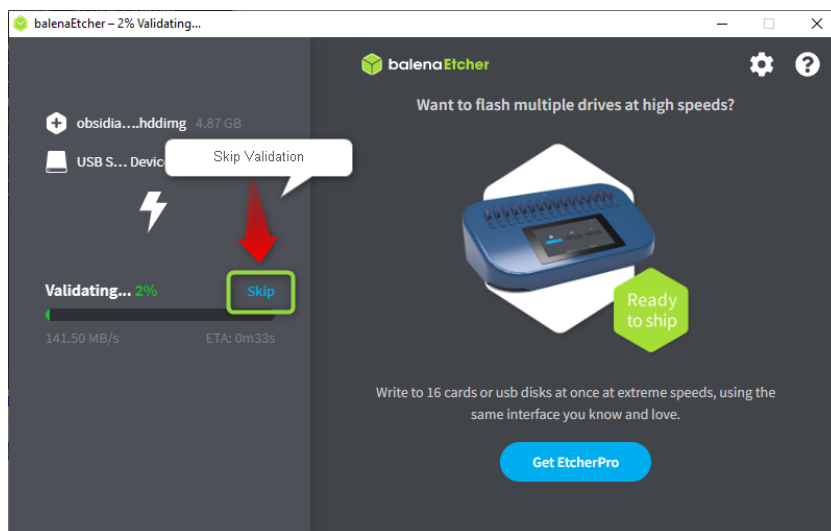
3. Drag and drop your copy of the firmware image file on the plus symbol.



4. Select *Flash*.



**NOTE: After the image successfully installs, the image validation check may fail. It is recommended to skip the validation process.**



5. Connect the USB bootable disk to the management platform appliance and begin the firmware file installation process.

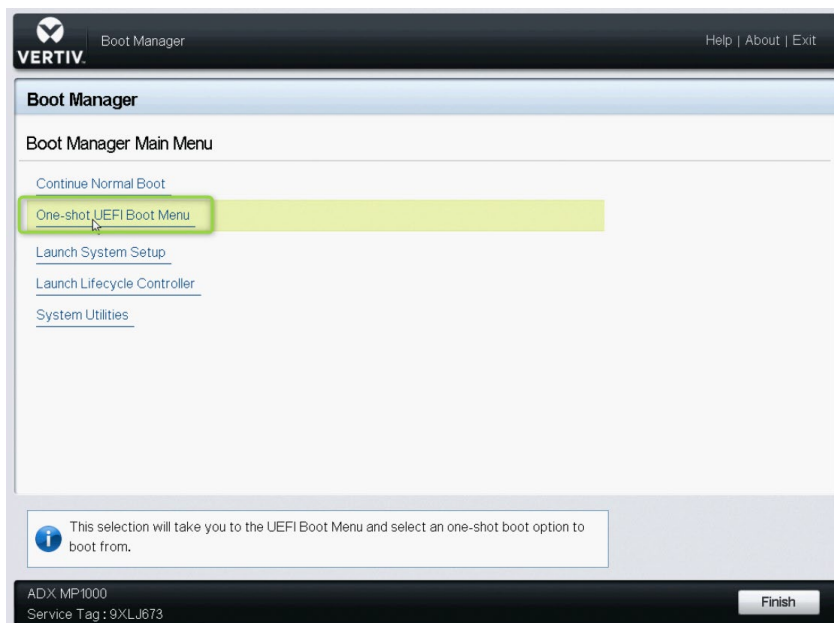
## 2. Installing the Firmware File

To install the firmware:

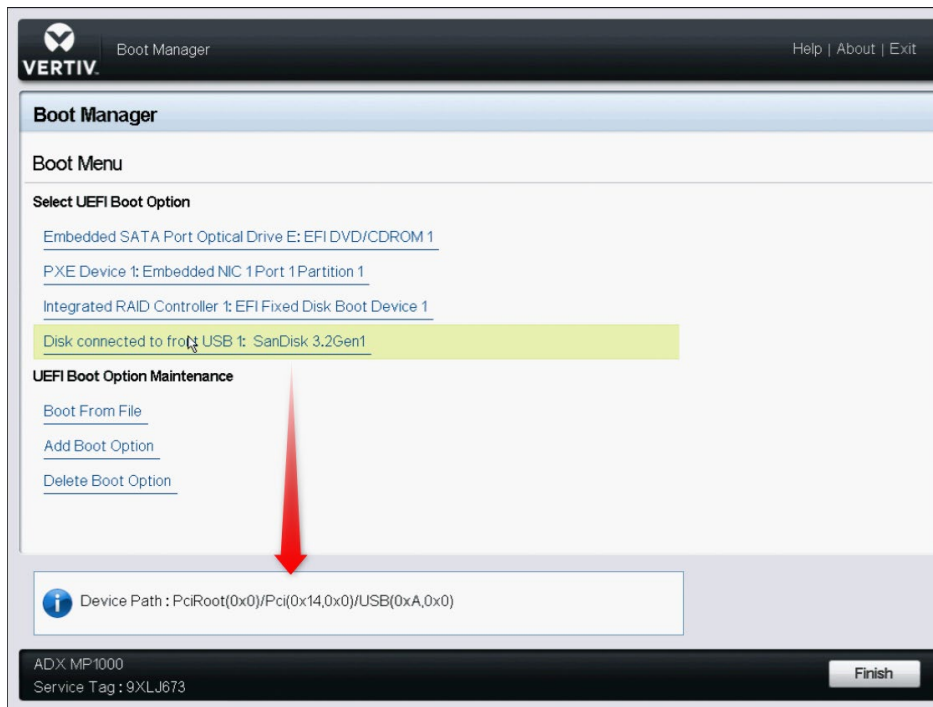
1. Connect a monitor, keyboard, and mouse to the VGA console port and the USB ports on the back of the Vertiv™ Avocent® ADX MP1000 Management Platform appliance.
- or-
- Connect a KVM appliance.
2. Reboot the management platform appliance.
  3. Press F11 to access the Boot Manager.



- On the Boot Manager Main Menu screen, select *One-shot UEFI Boot Menu*, then press **Enter**.



5. Select the name of your USB bootable disk, then press Enter.



6. Select *install* to install the image on the USB bootable disk.



7. A message appears to confirm if you wish to install the image on this location. Enter y to confirm. The installation process can take several minutes.



- After the installation finishes, remove the USB bootable disk and press Enter.

```

Swap partition size: 22866MiB
*****
Deleting partition table on /dev/sda ...
35+0 records in
35+0 records out
Creating new partition table on /dev/sda ...
Creating boot partition on /dev/sda1
sda: sda1
Creating rootfs partition on /dev/sda2
Creating updatefs partition on /dev/sda3
Creating swap partition on /dev/sda4
Model: DELL PERC H330 Adp (scsi)
Disk /dev/sda: 480GB
Sector size (logical/physical): 512B/4096B
Partition Table: gpt
Disk Flags:

Number  Start  End      Size    File system  Name  Flags
  1      1049kB 2149MB  2147MB  fat32        boot boot, esp
  2      2149MB 229GB   227GB   ext4         root
  3      229GB  456GB   227GB   ext4         root
  4      456GB  480GB   24.0GB  linux-swap(v1) swap

Partition UUIDs:
/dev/sda1 => /dev/disk/by-partuuid/d92d195e-93ff-4c61-9b4d-8d473797fe13
/dev/sda2 => /dev/disk/by-partuuid/42083ccb-ba5b-497a-a475-ee2241e6a1ed
/dev/sda3 => /dev/disk/by-partuuid/6e8e8c77-c582-44fb-8068-ad1aac072273
/dev/sda4 => /dev/disk/by-partuuid/6ca5deaf-3b4c-43ed-9467-0954c78fc6e6

Formatting /dev/disk/by-partuuid/d92d195e-93ff-4c61-9b4d-8d473797fe13 to ufat...
mkfs.fat 4.1 (2017-01-24)
Formatting /dev/disk/by-partuuid/6ca5deaf-3b4c-43ed-9467-0954c78fc6e6 to swap...
Setting up swapspace version 1, size = 23975666144 bytes
Copying rootfs files...
0+377001 records in
0+377001 records out
resize2fs 1.44.3 (10-July-2018)
Resizing the filesystem on /dev/disk/by-partuuid/42083ccb-ba5b-497a-a475-ee2241e6a1ed to 55350272 (4k) blocks.
The filesystem on /dev/disk/by-partuuid/42083ccb-ba5b-497a-a475-ee2241e6a1ed is now 55350272 (4k) blocks long.

EXT4-fs (sda2): mounted filesystem with ordered data mode. Opts: (null)
Installation of platform secure boot files...
/usr/sbin/install-secureboot-esl.sh: Skipping installation of UEFI keys. System is not in Secure Boot 'SETUP' mode.
install-secureboot-esl.sh STOPPED.
Secure boot keys already present. System not in setup mode.
Preparing boot partition
Remove your installation media, and press ENTER

```

This screen appears for approximately five seconds before the system automatically reboots into Obsidian Linux.



- Once the reboot completes, enter the default password admin/admin.

```

3.17.8 Hint: Num Lock on

MP1000 login: admin
Last login: Tue Mar 28 15:41:24 +0000 2023 on /dev/tty1.
Using default permissions for admin

Password> admin /admin

** You must change your password. **
New password>
Confirm password>

** Please log in again with new password. **
Password> _

```

- When prompted, change your password and confirm it.

**NOTE:** By default, DHCP is enabled and automatically assigns an IP address to the Vertiv™ Avocent® ADX MP1000 Management Platform. This IP address allows you to access the Vertiv™ Avocent® MP1000 Management Platform web UI (User Interface). You may also configure a static IP address via console.

```
Enter ".." in a submenu to return to parent menu
Enter "0" to return to the root menu

:: /
eno1 : 1 (DHCP)
# Service Root
Product : ADX_MP1000
UUID : 4c4c4544-0058-4c10-804a-b9c04f363733
Software Version : 1.27.7
Firmware Version : 3.17.8
Serial Number : 9XLJ673
# Chassis
Asset Tag : Not Specified
SKU : Not Specified
# Manager
Enrollment : UNENROLLABLE
Current Date/Time : 2023-03-28T15:45:33+0000
Options:
0 Exit the CLI
1 Show/Configure Network Settings
2 Show Thermal and Power Data
3 Show/Configure Chassis
4 Show/Configure Manager
5 Change Admin Password
6 Require Admin Password Change on Next Login
7 Update Firmware
8 Reset to Factory Defaults
9 Shutdown
10 Reboot
11 Diagnostics
Select an option:
/> ^
```

**NOTE:** Before any other actions can take place, you must upload the required licenses for the Vertiv™ Avocent® ADX MP1000 Management Platform to the web UI.

### 3. Licensing

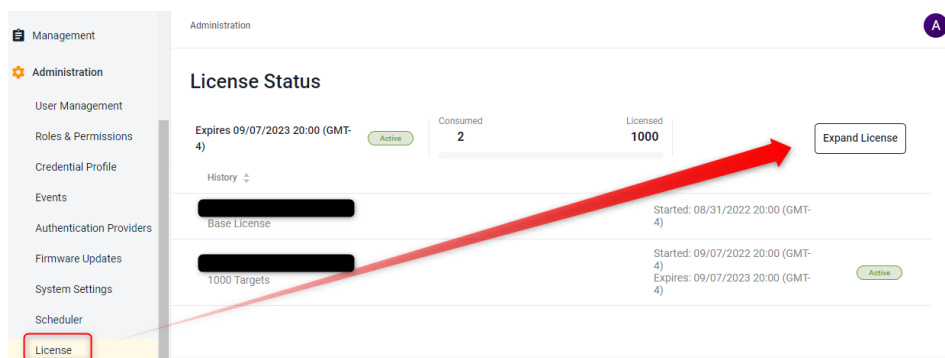
After changing your password, you can log in to the Vertiv™ Avocent® MP1000 Management Platform web UI to upload your required licenses. If you do not already have the management platform licenses, contact Vertiv Technical Support to obtain them.

The following keys are the required licenses:

- Master Key: For Appliances
- Add-ons: For Targets

To add a license:

1. Log in to the web UI as an administrator.
2. Using the side navigation menu, select *Administration – License*.
3. Click *Expand License*.



4. In the Number field, enter the appropriate License Key.
5. Click *Add License*.